

**DA  
C  
C  
M**

**RACCORDI  
ANSI**

# Curve ANSI long radius (R=1,5D) - ASTM A 234 WPB

## Long radius (R=1,5D) ANSI bends - ASTM A 234 WPB

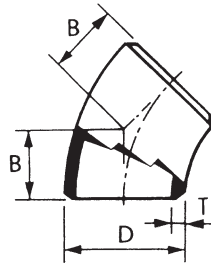


Fig. 4000 STD  
Fig. 4002 XS

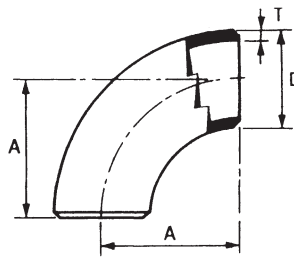


Fig. 4001 STD  
Fig. 4003 XS

Ø n	Ø e	Spessore		B	Peso kg	
		Standard T	Extra strong T		Standard	Extra strong
1	33.4	3.38	4.55	22.22	0.08	0.1
1 <sup>1</sup> / <sub>4</sub>	42.16	3.56	4.85	25.4	0.13	0.18
1 <sup>1</sup> / <sub>2</sub>	48.26	3.68	5.08	28.57	0.19	0.26
2	60.32	3.91	5.54	34.92	0.34	0.47
2 <sup>1</sup> / <sub>2</sub>	73.02	5.16	7.01	44.45	0.67	0.89
3	88.9	5.49	7.62	50.8	1.08	1.44
3 <sup>1</sup> / <sub>2</sub>	101.6	5.74	8.08	57.15	1.49	2.05
4	114.3	6.02	8.56	63.5	2.05	2.83
5	141.3	6.55	9.52	79.37	3.43	4.85
6	168.27	7.11	10.97	95.25	5.33	8.02
8	219.07	8.18	12.7	127	10.65	16.1
10	273.05	9.27	12.7	158.75	18.8	25.4
12	323.85	9.52	12.7	190.5	27.9	36.7
14	355.6	9.52	12.7	222.25	35.8	47.15
16	406.4	9.52	12.7	254	46.9	62.06
18	457.2	9.52	12.7	285.75	59	79.5
20	508	9.52	12.7	317.5	73.5	97.5
22	558.8	9.52	12.7	342.9	98	113
24	609.6	9.52	12.7	381	105.5	140.5

Ø n	Ø e	Spessore		A	Peso kg	
		Standard T	Extra strong T		Standard	Extra strong
1	33.4	3.38	4.55	38.1	0.15	0.2
1 <sup>1</sup> / <sub>4</sub>	42.16	3.56	4.85	47.62	0.26	0.35
1 <sup>1</sup> / <sub>2</sub>	48.26	3.68	5.08	57.15	0.38	0.51
2	60.32	3.91	5.54	76.2	0.68	0.94
2 <sup>1</sup> / <sub>2</sub>	73.02	5.16	7.01	95.25	1.35	1.79
3	88.9	5.49	7.62	114.3	2.15	2.87
3 <sup>1</sup> / <sub>2</sub>	101.6	5.74	8.08	133.35	2.88	4.1
4	114.3	6.02	8.56	152.4	4.1	5.65
5	141.3	6.55	9.52	190.5	6.85	9.7
6	168.27	7.11	10.97	228.6	10.65	16
8	219.07	8.18	12.7	304.8	21.3	32.2
10	273.05	9.27	12.7	381	37.6	50.8
12	323.85	9.52	12.7	457.2	55.8	73.4
14	355.6	9.52	12.7	533.4	71.6	94.3
16	406.4	9.52	12.7	609.6	93.8	123.7
18	457.2	9.52	12.7	685.8	118	159
20	508	9.52	12.7	762	147	195
22	558.8	9.52	12.7	838.2	196	226
24	609.6	9.52	12.7	914.4	211	281

# Tee e fondelli ANSI - ASTM A 234 WPB

## ANSI tees and caps - ASTM A 234 WPB

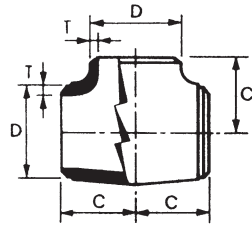


Fig. 4004 STD  
Fig. 4005 XS

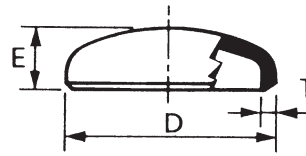


Fig. 4006 STD  
Fig. 4007 XS

Ø n	Ø e	Spessore		C	Peso kg	
		Standard T	Extra strong T		Standard	Extra strong
1/2	21.34	2.77	3.73	25.4	0.15	0.21
3/4	26.67	2.87	3.91	28.57	0.2	0.27
1	33.4	3.38	4.55	38.1	0.4	0.82
1 1/4	42.16	3.56	4.85	47.62	0.77	0.86
1 1/2	48.26	3.68	5.08	57.15	1.08	1.22
2	60.32	3.91	5.54	63.5	1.48	1.86
2 1/2	73.02	5.16	7.01	76.2	2.45	3.07
3	88.9	5.49	7.62	85.72	3.8	4.29
3 1/2	101.6	5.74	8.08	95.25	4.98	6.15
4	114.3	6.02	8.56	104.77	5.9	7.24
5	141.3	6.55	9.52	123.82	9.5	12.95
6	168.27	7.11	10.97	142.87	14.9	19.25
8	219.07	8.18	12.7	177.8	27.18	34.42
10	273.05	9.27	12.7	215.9	41.3	58.4
12	323.85	9.52	12.7	254	56.6	79.3
14	355.6	9.52	12.7	279.4	81.54	117.78
16	406.4	9.52	12.7	304.8	99.66	142.69
18	457.2	9.52	12.7	342.9	126.8	170
20	508	9.52	12.7	381	168	245
24	609.6	9.52	12.7	431.8	240	350

Ø n	Ø e	Spessore		C	Peso kg	
		Standard T	Extra strong T		Standard	Extra strong
1/2	21.34	2.77	3.73	25.4	0.03	0.04
3/4	26.67	2.87	3.91	25.4	0.06	0.08
1	33.4	3.38	4.55	38.1	0.1	0.12
1 1/4	42.16	3.56	4.85	38.1	0.14	0.18
1 1/2	48.26	3.68	5.08	38.1	0.16	0.22
2	60.32	3.91	5.54	38.1	0.23	0.32
2 1/2	73.02	5.16	7.01	38.1	0.37	0.47
3	88.9	5.49	7.62	50.8	0.65	0.85
3 1/2	101.6	5.74	8.08	63.5	0.97	1.3
4	114.3	6.02	8.56	63.5	1.15	1.58
5	141.3	6.55	9.52	76.2	1.9	2.65
6	168.27	7.11	10.97	88.9	2.92	4.3
8	219.07	8.18	12.7	101.6	5.07	7.6
10	273.05	9.27	12.7	127	9.1	12
12	323.85	9.52	12.7	152.4	13.4	17.2
14	355.6	9.52	12.7	165.1	16.1	20.5
16	406.4	9.52	12.7	177.8	20.3	26.2
18	457.2	9.52	12.7	203.2	26	33.5
20	508	9.52	12.7	228.6	32.2	42.6
22	558.8	9.52	12.7	254	42	51
24	609.6	9.52	12.7	266.7	46.2	59.4

# Riduzioni concentriche ed eccentriche - ASTM A 234 WPB

## Concentric and excentric reducers - ASTM A 234 WPB

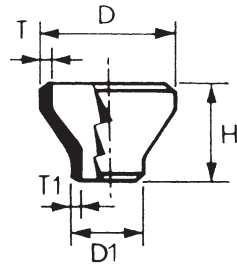


Fig. 4008 STD

Fig. 4009 XS

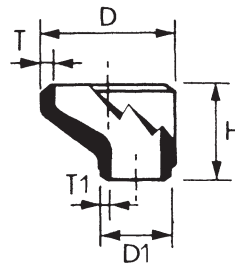


Fig. 4010 STD

Fig. 4011 XS

Ø nominale	Ø esterno D	Ø esterno D1	C	M	H	Peso kg STD	Weight kg XS
1/2 x 1/4	21.34	13.70	25.40	25.40	-	-	-
1/2 x 3/8	21.34	17.10	25.40	25.40	-	-	-
3/4 x 3/8	26.67	17.10	28.57	28.57	38.10	0.07	0.10
3/4 x 1/2	26.67	21.34	28.57	28.57	38.10	0.07	0.10
1 x 1/2	33.40	21.34	38.10	38.10	50.80	0.10	0.15
1 x 3/4	33.40	26.67	38.10	38.10	50.80	0.10	0.15
1 1/4 x 1/2	42.16	21.34	47.62	47.62	50.80	0.15	0.20
1 1/4 x 3/4	42.16	26.67	47.62	47.62	50.80	0.15	0.20
1 1/4 x 1	42.16	33.40	47.62	47.62	50.80	0.15	0.20
1 1/2 x 1/2	48.26	21.34	57.15	57.15	63.50	0.25	0.32
1 1/2 x 3/4	48.26	26.67	57.15	57.15	63.50	0.27	0.33
1 1/2 x 1	48.26	33.40	57.15	57.15	63.50	0.25	0.35
1 1/2 x 1 1/2	48.26	42.16	57.15	57.15	63.50	0.29	0.35
2 x 3/4	60.32	26.67	63.50	44.45	76.20	0.40	0.50
2 x 1	60.32	33.40	63.50	50.80	76.20	0.40	0.50
2 x 1 1/4	60.32	42.16	63.50	57.15	76.20	0.43	0.52
2 x 1 1/2	60.32	48.26	63.50	60.32	76.20	0.45	0.54
2 1/2 x 1	73.02	33.40	76.20	57.15	88.90	0.68	0.84
2 1/2 x 1 1/4	73.02	42.16	76.20	63.50	88.90	0.68	0.84
2 1/2 x 1 1/2	73.02	48.26	76.20	66.67	88.90	0.72	0.91
2 1/2 x 2	73.02	60.32	76.20	69.85	88.90	0.77	0.97
3 x 1 1/4	88.90	42.16	85.72	69.85	88.90	0.86	1.18
3 x 1 1/2	88.90	48.26	85.72	73.02	88.90	0.90	1.23
3 x 2	88.90	60.32	85.72	76.20	88.90	0.96	1.28
3 x 2 1/2	88.90	73.02	85.72	82.55	88.90	1.04	1.39
3 1/2 x 1 1/2	101.60	48.26	95.25	79.37	101.60	1.22	1.54
3 1/2 x 2	101.60	60.32	95.25	82.55	101.60	1.34	1.63
3 1/2 x 2 1/2	101.60	73.02	95.25	88.90	101.60	1.34	1.63
3 1/2 x 3	101.60	88.90	95.25	92.07	101.60	1.40	1.81
4 x 1 1/2	114.30	48.26	104.77	85.72	101.60	1.54	2.04
4 x 2	114.30	60.32	104.77	88.90	101.60	1.63	2.13
4 x 2 1/2	114.30	73.02	104.77	95.25	101.60	1.72	2.20
4 x 3	114.30	88.90	104.77	98.42	101.60	1.77	2.26
4 x 3 1/2	114.30	101.60	104.77	101.60	101.60	1.81	2.38
5 x 2	141.30	60.32	123.82	104.77	127.00	2.62	3.17
5 x 2 1/2	141.30	73.02	123.82	107.95	127.00	2.66	3.27
5 x 3	141.30	88.90	123.82	111.12	127.00	2.72	3.49
5 x 3 1/2	141.30	101.60	123.82	114.30	127.00	2.75	3.92
5 x 4	141.30	114.30	123.82	117.47	127.00	2.81	3.71
6 x 2 1/2	168.27	73.02	142.87	120.65	139.70	3.71	5.17
6 x 3	168.27	88.90	142.87	123.82	139.70	3.80	5.39
6 x 3 1/2	168.27	101.60	142.87	127.00	139.70	3.95	5.94
6 x 4	168.27	114.30	142.87	130.17	139.70	3.94	5.62
6 x 5	168.27	141.30	142.87	136.52	139.70	4.03	5.84
8 x 3 1/2	219.07	101.60	177.80	152.40	152.40	6.50	9.86
8 x 4	219.07	114.30	177.80	155.57	152.40	5.62	9.06
8 x 5	219.07	141.30	177.80	161.92	152.40	5.84	9.38
8 x 6	219.07	168.27	177.80	168.27	152.40	6.34	9.78

# Riduzioni concentriche ed eccentriche - ASTM A 234 WPB

## Concentric and excentric reducers - ASTM A 234 WPB

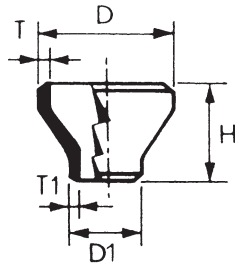


Fig. 4008 STD

Fig. 4009 XS

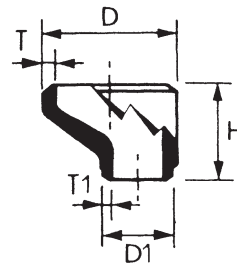


Fig. 4010 STD

Fig. 4011 XS

Ø nominale	Ø esterno D	Ø esterno D1	C	H	M	Peso kg STD	Weight kg XS
10 x 4	273.05	114.3	215.9	184.15	177.8	9.98	13.14
10 x 5	273.05	141.3	215.9	190.5	177.8	10.19	13.5
10 x 6	273.05	168.27	215.9	196.67	177.8	10.42	14.04
10 x 8	273.05	219.07	215.9	203.2	177.8	10.69	14.45
12 x 5	323.85	141.3	254	215.9	203.2	14.5	18.91
12 x 6	323.85	168.27	254	219.07	203.2	14.72	19.39
12 x 8	323.85	219.07	254	228.6	203.2	14.95	19.8
12 x 10	323.85	273.05	254	241.3	203.2	15.4	20.38
14 x 6	355.6	168.27	279.4	238.12	330.2	26.05	34.89
14 x 8	355.6	219.07	279.4	247.65	330.2	26.27	35.1
14 x 10	355.6	273.05	279.4	257.17	330.2	26.59	35.56
14 x 12	355.6	323.85	279.4	269.87	330.2	26.82	35.83
16 x 6	406.4	168.27	304.8	263.52	355.6	33.15	44
16 x 8	406.4	219.07	304.8	273.05	355.6	32.39	42.67
16 x 10	406.4	273.05	304.8	282.57	355.6	32.84	43.26
16 x 12	406.4	323.85	304.8	295.27	355.6	33.43	43.49
16 x 14	406.4	355.6	304.8	304.8	355.6	33.98	44.62
18 x 8	457.2	219.07	342.9	298.45	381	40	53.12
18 x 10	457.2	273.05	342.9	307.97	381	38.5	51.64
18 x 12	457.2	323.85	342.9	320.67	381	38.96	52.1
18 x 14	457.2	355.6	342.9	330.2	381	39.41	52.55
18 x 16	457.2	406.4	342.9	330.2	381	39.86	53
20 x 8	508	219.07	381	323.85	-	-	-
20 x 10	508	273.05	381	333.37	-	-	-
20 x 12	508	323.85	381	346.07	508	57.08	76.19
20 x 14	508	355.6	381	355.6	508	57.98	77.19
20 x 16	508	406.4	381	355.6	508	58.44	77.73
20 x 18	508	457.2	381	368.3	508	58.89	78.37
22 x 10	558.8	273.05	419.1	358.78	-	-	-
22 x 12	558.8	323.85	419.1	371.48	-	-	-
22 x 14	558.8	355.6	419.1	381	508	57.99	76.1
22 x 16	558.8	406.4	419.1	381	508	61.15	80.18
22 x 18	558.8	457.2	419.1	393.7	508	62.97	82.45
22 x 20	558.8	508	419.1	406.4	508	64.33	84.26
24 x 10	609.6	273.05	431.8	384.2	-	-	-
24 x 12	609.6	323.85	431.8	396.9	-	-	-
24 x 14	609.6	355.6	431.8	406.4	-	-	-
24 x 16	609.6	406.4	431.8	406.4	508	72	95.4
24 x 18	609.6	457.2	431.8	419.1	508	72	95.4
24 x 20	609.6	508	431.8	431.8	508	72	95.4
24 x 22	609.6	558.8	431.8	431.8	508	72	95.4