

- **Port Bore:** Full Bore
- **Face-face:** ANSI-B16.10
- **Material:** CF8M (316), CF8 (304), WCB (Cast Steel)
- **Flange:** ANSI-B16.5 Class 150/300 (EN1759-1)
- **Testing:** According to API-598, (EN12266-1,2)
- **Certificate:** EN10204-3.1B
- **Temp.:** -10°C to 200°C (-50°F to 400°F)
- **Gasket:** PTFE (Virgin Pure PTFE)
- **OPTIONS:** JIS-10K Available, Stellite Seat Available

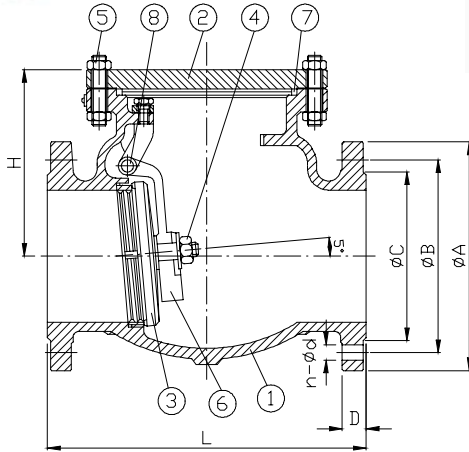
1/2" to 2" → Forged Casting
2-1/2" to 12" → Sand Casting

| Test Pressure | | |
|----------------|-----------|-----------|
| Test | Class 150 | Class 300 |
| Shell by water | 435 PSIG | 1125 PSIG |
| Seat by water | 319 PSIG | 825 PSIG |
| Seat by air | 100 PSIG | 100 PSIG |

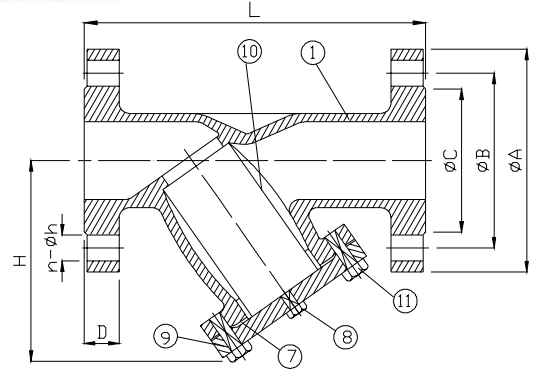
| MATERIAL LIST | | |
|---------------|-----------------|----------|
| NO. | PART | MATERIAL |
| 1 | Body | CF8M |
| 2 | Cover | CF8M |
| 3 | Disc | CF8M |
| 4 | Disc Nut | CF8M |
| 5 | Cover Bolt/Nut | S/S304 |
| 6 | Arm | CF8M |
| 7 | Gasket | PTFE |
| 8 | Plug | S/S316 |
| 9 | Bonnet | CF8M |
| 10 | Screen | S/S304 |
| 11 | Bonnet Bolt/Nut | A194-B8 |



DJV-SC
Bolted Cover,
Swing Type Disc,
Integral Seat Ring



DJV-YS
Bolted Bonnet,
PTFE Gasket,
S/S316 or S/S304 Screen
Mesh Hole 0.8mm, 1.0mm,
1.2mm & 1.5mm Available



| DIMENSION (mm): ANSI-150# | | | | | | | | | | |
|---------------------------|-----|-----|-----|-----|-------|-----|------|-------|---------|--|
| INCH | MM | L | H | A | B | C | D | n-d | WT (KG) | |
| 1/2" | 15 | 108 | 63 | 89 | 60.5 | 35 | 11.2 | 4-16 | 1.5 | |
| 3/4" | 20 | 117 | 66 | 98 | 70 | 43 | 11.2 | 4-16 | 2 | |
| 1" | 25 | 127 | 75 | 108 | 79.5 | 51 | 11.2 | 4-16 | 2.5 | |
| 1-1/2" | 40 | 165 | 85 | 127 | 98.5 | 73 | 14.3 | 4-16 | 5 | |
| 2" | 50 | 203 | 110 | 152 | 120.5 | 92 | 15.9 | 4-19 | 7.5 | |
| 2-1/2" | 65 | 216 | 135 | 178 | 139.5 | 105 | 17.5 | 4-19 | 13 | |
| 3" | 80 | 241 | 135 | 190 | 152.5 | 127 | 19.1 | 4-19 | 16 | |
| 4" | 100 | 292 | 170 | 229 | 190.5 | 157 | 23.9 | 8-19 | 30 | |
| 5" | 125 | 330 | 170 | 254 | 216 | 186 | 23.9 | 8-22 | 35 | |
| 6" | 150 | 356 | 210 | 279 | 241.5 | 216 | 25.4 | 8-22 | 46 | |
| 8" | 200 | 495 | 250 | 343 | 298.5 | 270 | 28.6 | 8-22 | 78 | |
| 10" | 250 | 622 | 315 | 406 | 362 | 324 | 30.2 | 12-25 | 138 | |
| 12" | 300 | 699 | 376 | 483 | 432 | 381 | 31.8 | 12-25 | 205 | |

| DIMENSION (mm): ANSI-300# | | | | | | | | | | |
|---------------------------|-----|-----|-----|-----|-------|-----|------|-------|---------|--|
| INCH | MM | L | H | A | B | C | D | n-d | WT (KG) | |
| 1/2" | 15 | 152 | 80 | 95 | 66.5 | 35 | 14.3 | 4-16 | 3.5 | |
| 3/4" | 20 | 178 | 90 | 117 | 82.5 | 43 | 15.9 | 4-19 | 5 | |
| 1" | 25 | 216 | 100 | 124 | 89 | 51 | 17.5 | 4-19 | 6.5 | |
| 1-1/2" | 40 | 241 | 116 | 156 | 114.5 | 73 | 20.7 | 4-22 | 11 | |
| 2" | 50 | 267 | 129 | 165 | 127 | 92 | 22.3 | 8-19 | 16 | |
| 2-1/2" | 65 | 292 | 143 | 190 | 149 | 105 | 25.4 | 8-22 | 23.5 | |
| 3" | 80 | 318 | 164 | 210 | 168 | 127 | 28.6 | 8-22 | 29 | |
| 4" | 100 | 356 | 177 | 254 | 200 | 157 | 31.8 | 8-22 | 42.5 | |
| 5" | 125 | 400 | 217 | 279 | 235 | 186 | 35 | 8-22 | 60 | |
| 6" | 150 | 444 | 231 | 318 | 270 | 216 | 36.6 | 12-22 | 84 | |
| 8" | 200 | 533 | 291 | 381 | 330 | 270 | 41.3 | 12-25 | - | |
| 10" | 250 | 622 | 319 | 444 | 387.5 | 324 | 47.7 | 16-29 | - | |
| 12" | 300 | 711 | 360 | 521 | 451 | 381 | 50.8 | 16-32 | - | |

| DIMENSION (mm): ANSI-150# | | | | | | | | | | |
|---------------------------|-----|-----|-----|-----|-------|-----|------|-------|---------|--|
| INCH | MM | L | H | A | B | C | D | n-d | WT (KG) | |
| 1/2" | 15 | 120 | 75 | 89 | 60.5 | 35 | 11.2 | 4-16 | 1.5 | |
| 3/4" | 20 | 140 | 75 | 98 | 70 | 43 | 11.2 | 4-16 | 2 | |
| 1" | 25 | 150 | 100 | 108 | 79.5 | 51 | 11.2 | 4-16 | 2.5 | |
| 1-1/2" | 40 | 190 | 120 | 127 | 98.5 | 73 | 14.3 | 4-16 | 5 | |
| 2" | 50 | 210 | 140 | 152 | 120.5 | 92 | 15.9 | 4-19 | 7 | |
| 2-1/2" | 65 | 250 | 175 | 178 | 139.5 | 105 | 17.5 | 4-19 | 13.5 | |
| 3" | 80 | 280 | 196 | 190 | 152.5 | 127 | 19.1 | 4-19 | 15.5 | |
| 4" | 100 | 340 | 244 | 229 | 190.5 | 157 | 23.9 | 8-19 | 24.5 | |
| 5" | 125 | 380 | 277 | 254 | 216 | 186 | 23.9 | 8-22 | 36 | |
| 6" | 150 | 420 | 320 | 279 | 241.5 | 216 | 25.4 | 8-22 | 41.5 | |
| 8" | 200 | 500 | 390 | 343 | 298.5 | 270 | 28.6 | 8-22 | 88 | |
| 10" | 250 | 700 | 430 | 406 | 362 | 324 | 30.2 | 12-25 | 142 | |
| 12" | 300 | 780 | 600 | 483 | 432 | 381 | 31.8 | 12-25 | 175 | |

| DIMENSION (mm): ANSI-300# | | | | | | | | | | |
|---------------------------|-----|-----|-----|-----|-------|-----|------|-------|---------|--|
| INCH | MM | L | H | A | B | C | D | n-d | WT (KG) | |
| 1/2" | 15 | 130 | 75 | 95 | 66.5 | 35 | 14.3 | 4-16 | 2 | |
| 3/4" | 20 | 150 | 75 | 117 | 82.5 | 43 | 15.9 | 4-19 | 3.4 | |
| 1" | 25 | 160 | 100 | 124 | 89 | 51 | 17.5 | 4-19 | 4.5 | |
| 1-1/2" | 40 | 200 | 120 | 156 | 114.5 | 73 | 20.7 | 4-22 | 9.5 | |
| 2" | 50 | 250 | 140 | 165 | 127 | 92 | 22.3 | 8-19 | 13.5 | |
| 2-1/2" | 65 | 290 | 175 | 190 | 149 | 105 | 25.4 | 8-22 | 17 | |
| 3" | 80 | 310 | 196 | 210 | 168 | 127 | 28.6 | 8-22 | 20.4 | |
| 4" | 100 | 350 | 244 | 254 | 200 | 157 | 31.8 | 8-22 | 31 | |
| 5" | 125 | 400 | 277 | 279 | 235 | 186 | 35 | 8-22 | 42 | |
| 6" | 150 | 489 | 320 | 318 | 270 | 216 | 36.6 | 12-22 | 50 | |
| 8" | 200 | 600 | 390 | 381 | 330 | 270 | 41.3 | 12-25 | 85 | |
| 10" | 250 | 730 | 430 | 444 | 387.5 | 324 | 47.7 | 16-29 | - | |